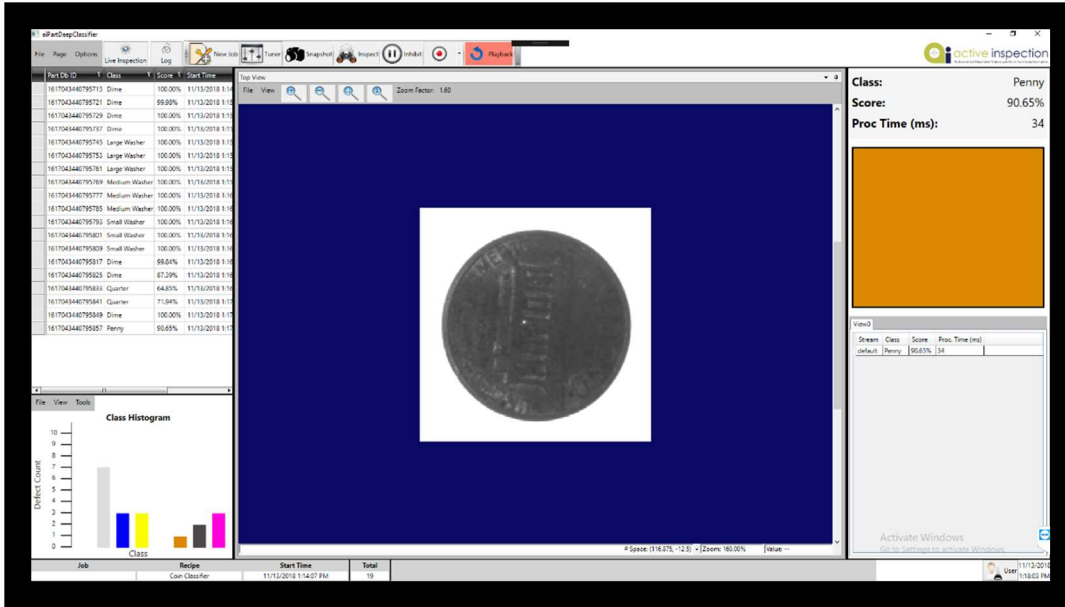


An out-of-box, turnkey solution including both processing hardware and software!

**Built Using**  
**Deep Learning**  
**Vision Tools**

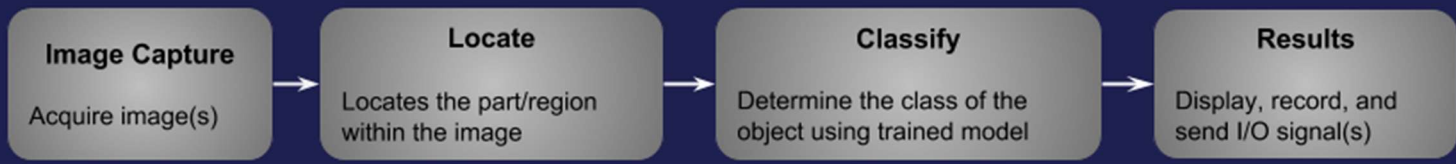


**Three-Step Inspection Process**

- 1. Data Collection:** Record images of a product
- 2. Train:** Train new model in as little as 10 minutes
- 3. Inspect:** Begin inspecting new parts

aiDeepClassifier provides a simple solution for classification of parts using powerful industry leading deep learning tools. It utilizes advanced algorithms to learn differences between parts even when there are slight variations within the same part. Parts are categorized in very little time. Each trained model can have as little as two categories (i.e. classes) and up to as many as necessary.

**Processing Flow**

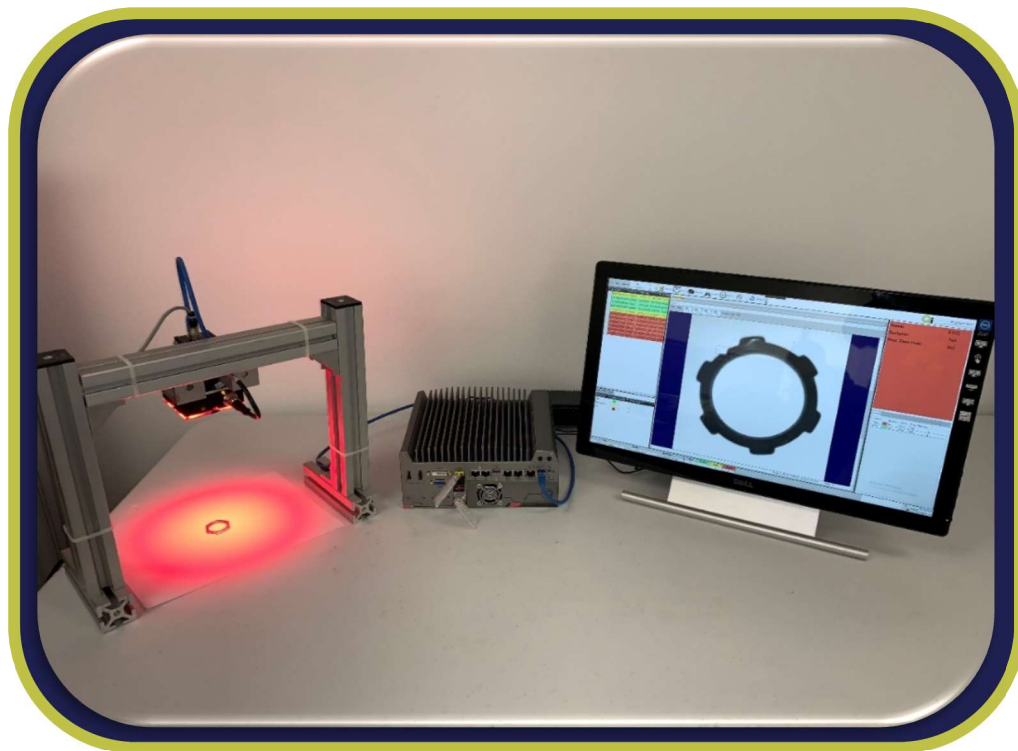


**SYSTEM FEATURES**

- Rugged PC
- Touch Screen Monitor
- Windows 10 Pro OS
- Cost Effective System
- Turnkey Vision Solution
- Fully Integrated HMI
- Allen Bradley & Siemens PLC
- OPC-UA Support
- GigE or USB3 Cameras
- Integrated 24V DC I/O
- Database for Inspection Data Storage
- Recording and Playback
- Review Past Inspection Data
- Unlimited Number of Product Inspection Settings

## Specifications

Rugged Industrial PC	OS	Windows 10 Pro 64-bit
	CPU	Intel(R) Core(TM) i7
	RAM	8-32GB
	GPU	Nvidia GTX 1050Ti or higher
	USB	4 USB 2.0, 4 USB 3.0
	Ethernet	4 IEEE 802.3at Gigabit PoE+ ports
Camera Vision	Number of Cameras	Multiple cameras supported for various views (e.g. top, bottom, sides)
	Scan Type	Both line and area cameras available
	Communication	GigE and USB3 are both supported
PLC	Allen Bradley and Siemens PLCs are supported	
I/O	Integrated 24V DC I/O – 8 inputs, 8 outputs	
Database	PostgreSQL or Microsoft SQL Server database for inspection data storage	



## Active Inspection

Automated machine vision solutions for manufacturers

Website: [www.activeinspection.com](http://www.activeinspection.com)

Location: 3540 Roger B Chaffee Blvd SE, Grand Rapids, MI 49548 USA

Phone: +1 (616) 425-9030

Email: [info@activeinspection.com](mailto:info@activeinspection.com)